

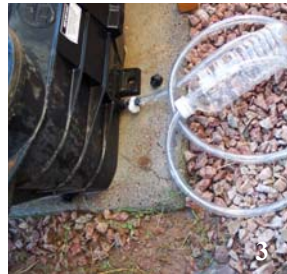
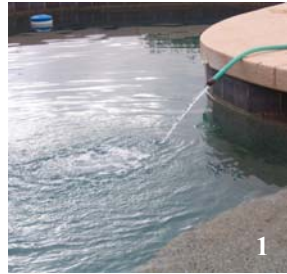
Aqua Lev Installation Instructions

(Model AL-150)

STEP 1

HOW TO FIND WATER LEVEL INSIDE THE PIPES AT THE EQUIPMENT PAD

1. Adjust water level in pool to the normal desired level. (Illustration #1)
2. Locate a place to tap into pool plumbing lines ie, drain plug on the pump pot or pressure gauge inlet. (Illustration # 2 & 3)
3. Install the clear leveling tube assembly.
4. Turn pump on and flush out any air pockets in the pipes, fill clear bottle.
5. Quickly move the bottle in the direction of the estimated water level, you may need to dig a hole down next to the return lines. Let water settle in clear leveling tube. (Illustration # 4)
6. Mark the pipe, you are now ready to proceed with – Step 2.



STEP 2

POOL RETURN LINE TAP BEST METHOD FOR INSTALLATION OF TEE

1. Find the static water line inside pipe after the last piece of equipment. (See Step 1 instructions on how to find the water level.)
2. Drain or Backwash filter until water in the pool is 4-5" below normal pool water level. (Illustration # 5)
3. Select a place to install reducing tee about 3" below normal pool water level. (See Illustration #7). Cut pipe and glue the tee pointing in direction that will allow the siphon hose to be installed correctly, see Step 3. (Installing the reducing tee above static water line level will compromise performance of the water leveler device, if plumbing is not air-tight when the pump is off. Most installations will perform satisfactorily when installed this way.) (Illustration #6).



STEP 3

INSTALLING THE SIPHON HOSE

After completing Step 2, you will want to locate the float chamber close to the saddle tee. Align the siphon equalizer hose so that there are no kinks or air traps. Basically, to allow air bubbles to work their way out in between filter pump cycles.

Illustration 9 & 10 OK

Illustration 11 Not OK



STEP 4

INSTALL THE FLOAT CHAMBER

On the front of the Float chamber is a water level set-point marker. (Illustration # 12) Mount the float chamber at the same elevation as the mark on the pipes found in Step 1. (Illustration # 13)



STEP 5

RUN WATER SUPPLY LINE TO POOL EQUIPMENT AREA (2 OPTIONS)

Option 1: 1/2" PVC Pipe or 1/2" Flexible Copper

Tap an existing Irrigation or water supply line and run 1/2" PVC or copper pipe underground to within 5 feet of equipment pad. Stub up out of the ground with copper or a poly wrapped galvanized pipe and install a standard garden type hose bib about 1 foot above the ground. A hose bib style vacuum breaker may be required at this point. (Illustration # 15 & 16)

Option 2: 3/8" UV-Nylon Tubing Kit (25' or 50')

Locate a water supply line typically a garden hose bib, use a 3/8" UV-Nylon tube to supply water to the float chamber, It's simple to run and conceals easily.



STEP 6

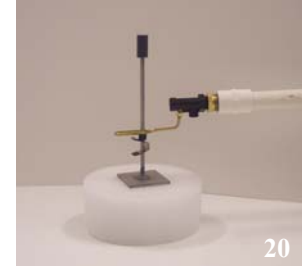
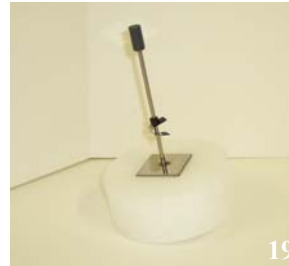
FINAL ADJUSTMENT OF FLOAT

1. Adjust water level in pool to the normal desired level (using garden hose for last time). (Illustration # 17)
2. Turn on pump and flush out any air in the system. (Illustration # 18)
3. Turn off pump, wait for water to settle in pipes and float chamber – about 15 seconds.



Water Level inside float chamber will be equal to the desired water level in the pool.

4. Adjust float rod spring clip either up or down depending on actual water level in float chamber. When you are getting close to the set point, water will be just dripping from the plunger valve a little. When the drip stays constant and minimal for a minute then your adjustment is close enough. (Illustration # 19 & 20)



Congratulations for a job well done. Enjoy!

OPTIONAL ACCESSORIES

1. Clamp on Saddle Tap
2. Nylon Tubing Kit (25' or 50')
3. 30" Deep Canister
4. Wall Mounting Bracket



Service - Assistance - Accessories
800-444-5033
www.aqualev.com